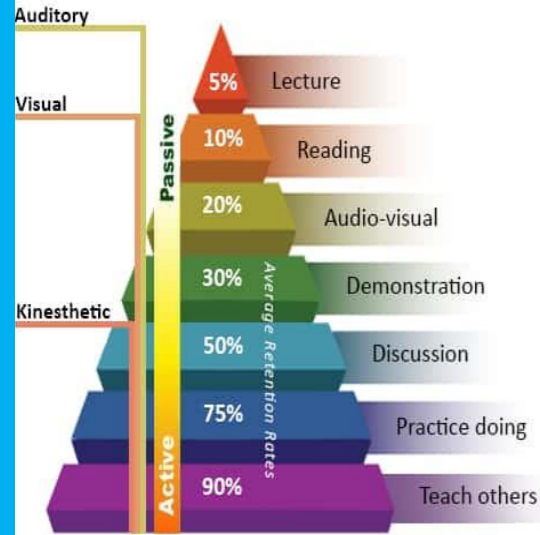
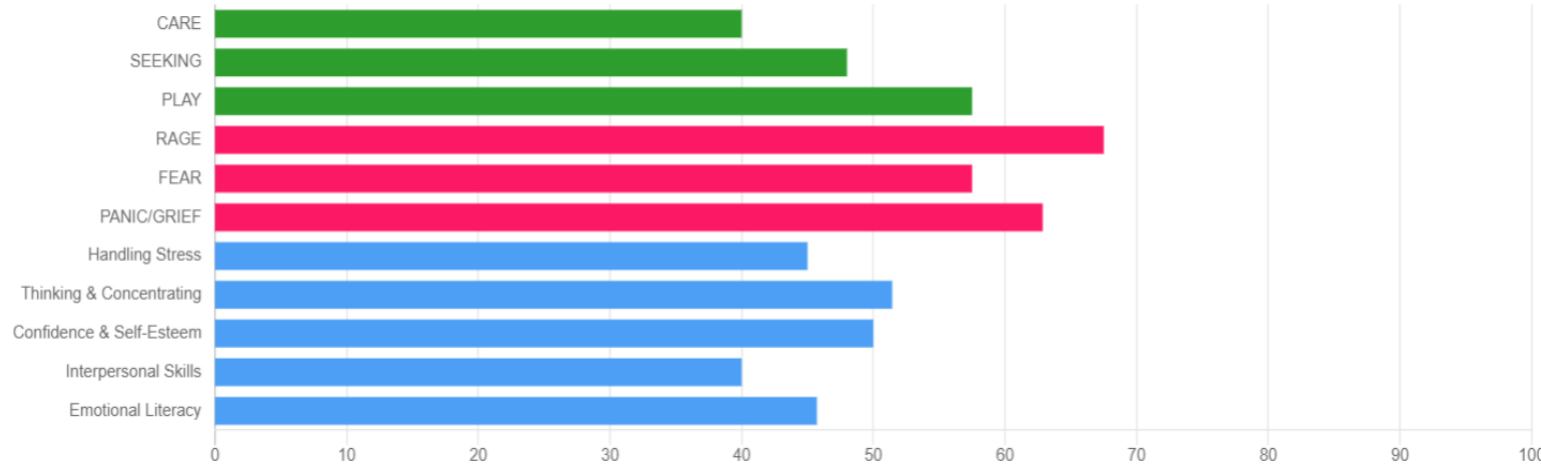


Year 4 Class Learning Journey



Whole-class average SEMH assessment data at start of academic year (baseline)



Maths	Literacy	Science
Motional therapies	Humanities	SOUNDS-WRITE First Rate Phonics
Art	PE	PSHE
Religious Education	RSE	Culture Capital & UNICEF

Thematic Days: RE, Rights Respecting Schools, World Book Day, World Number Day, LGBT & Black History Month, World Mental Health Day

Tracking my social, emotional and mental health overtime. **Therapeutic interventions** that support me in developing and growth. Forest Schools scheme of work is also taught weekly to all KS1-2.



Weekly delivery of: Rights Respecting Schools Articles, Picture News, Vote For Schools

Summer term two

Mental health and signs in my own health → Know that people who love and care for each other can be in a committed relationship (e.g. marriage), living together, but may also live apart

Summer term one

What does sacrifice mean? Multi/Humanist

Nurture and therapies – Motional snapshots & EHCP targets

Newspaper reports – Know how to structure, draft and critique a historical narrative piece.

PHILIP PULLMAN THE FIREWORK-MAKER'S DAUGHTER

Recount chronology – Know how to structure, draft and critique a historical narrative piece.

PE – Summer Sports (Motional focus: Care)

Rebound therapy programme

unicef RIGHTS RESPECTING SCHOOLS ARTICLE OF THE WEEK

States of Matter
Evaporation
Condensation
Precipitation
The Water Cycle

Proportionality
Money/time
Calculations

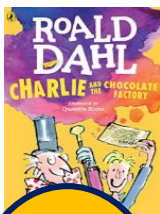
Rocks: Area survey, Volcanos: Ring of fire, volcano vocabulary, Pompeii: Making deductions about the past

Textiles – Michael Brenand-

SOUNDS-WRITE First Rate Phonics

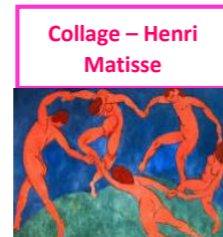
Summer term topic: Tremors & Eruptions: Pompeii

Families and close positive relationships

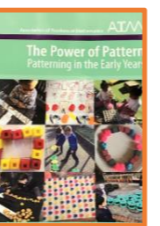


Non-chronological reports - Know how to structure, draft and critique a historical narrative piece.

What is sound? Speed of sound
Qualities of sound—Pitch and Volume
Human Voice
Ears— How we hear

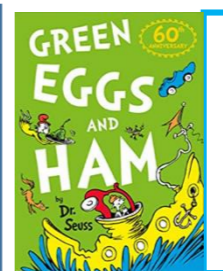


Proportionality
Place value/algebra
Geometry
Pattern



Nurture and therapies – **Motional snapshots & EHCP targets**

Location of the different hemispheres, describing differences: map referencing, explore and compare the UK and different climate zones, weather patterns



Advertisements - Compose and rehearse sentences orally, building a varied and rich vocabulary and an increasing range of sentence structures.

PE – Team games (**Motional focus: Play/Self-esteem**)

Why is there so much diversity of belief within _____? Christian Includes some theological aspects

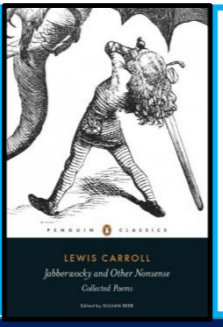
Spring term two

World Book Day Families and close positive relationships Know that a feature of positive family life is caring relationships; about the different ways in which people care for one

How do/have religious groups contribute to society and culture? Hindu/Christian

PE – Striking and fielding (**Motional focus: Rage, care, communication skills**)
Rebound therapy programme

Nonsense poetry - Compose and rehearse sentences orally, building a varied and rich vocabulary and an increasing range of sentence structures.



Recounts - Compose and rehearse sentences orally (including dialogue), progressively building a varied and rich vocabulary and an increasing range of sentence structures.

Multiplication and division
Area and division
Proportionality

Food journeys, unusual foods, scurvy!

Living Things and Habitats
Natural Cycles
Web of Living Things
Air Pollution—A Human Threat to the Environment
Ecology in our Local Areas



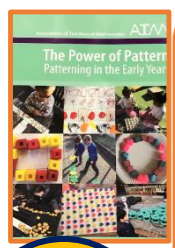
Nurture and therapies – **Motional snapshots & EHCP**



Spring term one

Spring term topic: Scrumdiddlyumptious

World Number Day Seeking and giving permission (consent) in different situations Families and close positive relationships LGBT and Black History Month



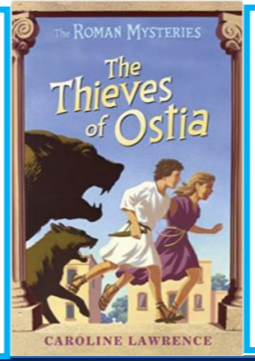
Geometry
Multiplication and division
Statistics
Pattern



A gladiator's life, famous gladiators, street maps of Rome, A day in the life, Roman numerals

Classes of vertebrates: Fish and Amphibians
Classes of vertebrates: Reptiles, Birds and Mammals
Classes of invertebrates: Insects, Arachnids and Molluscs
Classification of plants

Instructions and invitations - Know how structure, vocabulary and grammar can add clear description to a written piece.



Letter writing - Know how structure, vocabulary and grammar can add clear description to a written piece.

Nurture and therapies – **Motional snapshots & EHCP targets**



PE – Agility, balance, coordination (**Motional focus: Confidence and self-esteem**)
Rebound therapy programme

What do we mean by truth? Is seeing believing? Multi, including Sikh views on God as truth

Autumn term two

Healthy lifestyles (physical wellbeing) Recognise the importance of self-respect and how this can affect their thoughts and feelings about themselves; that everyone, including online



Where do religious beliefs come from? Christian

Nurture and therapies – **Motional snapshots & EHCP targets**



Week of Inspirational maths.
Place value.
Addition and subtraction.
Proportionality

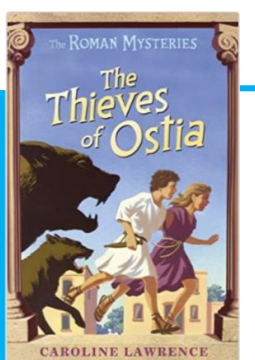
Cells and Nutrients
Teeth and Senses
Digestion
A Healthy Diet
Vitamins and Minerals



Rebound therapy programme
PE – Gymnastics (**Motional focus: Interpersonal skills**)

Chronology of Roman empire, locations of hillforts, Wish you were here..., character descriptions and debate

Historical narratives - Know how to structure, draft and critique a historical narrative piece.



Soliloquies - Know how to create settings, characters and plot. In narratives.

Autumn term one

Autumn term topic: The Romans

Healthy lifestyles (physical wellbeing) World Mental Health Day